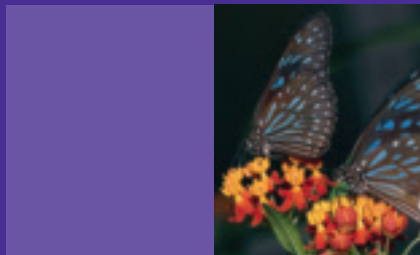


The Bankers Investment Trust PLC

Half Year Report to 30 April 2011



Contents

| | |
|-------------------|---|
| 1 | Objectives, Policy and Highlights |
| 2-3 | Interim Management Report |
| 4-5 | Consolidated Statement of Comprehensive Income |
| 6 | Consolidated Statement of Changes in Equity |
| 7 | Consolidated Balance Sheet |
| 8 | Consolidated Cash Flow Statement |
| 9-10 | Notes to the Financial Statements |
| 11 | Directors' Responsibility Statement |
| 12 | Largest Investments & Geographical Distribution |
| Inside back cover | Investor Information |

Objectives

- To achieve long term asset growth in excess of the FTSE All-Share Index.
- To achieve regular dividend growth in excess of the increase in the Retail Prices Index.

Policy

- To achieve both these objectives by investing in a broadly diversified international portfolio of shares.
- To incentivise the manager according to performance, measured against a composite index.

Highlights

| | (Unaudited) 30 April 2011 | (Audited) 31 October 2010 | % Change |
|---|--|--|-------------------|
| Assets | | | |
| Net asset value per ordinary share (with debt at book value) | 490.5p | 451.9p | 8.5 |
| Ordinary share mid-market price | 424.0p | 379.9p | 11.6 |
| Discount (share price to net asset value) | 13.6% | 15.9% | |
| Total assets less current liabilities (£'000) | £569,814 | £526,955 | 8.1 |
| Indices | | | |
| FTSE All-Share Index | 3,155.03 | 2,936.15 | 7.5 |
| S&P 500 Composite Index | 1,363.61 | 1,183.26 | 10.5 [#] |
| FTSE World Europe (ex UK) Index (£) | 416.55 | 377.71 | 10.3 |
| TOPIX (Tokyo First Section Index) | 851.85 | 810.91 | -0.2 [#] |
| FTSE World (ex UK) Index (£) | 363.13 | 333.23 | 9.0 |
| 50/50 FTSE All-Share Index/ FTSE World (ex UK) Index (£) | 216.50 | 200.00* | 8.3 |
| <small># – £ adjusted</small> | | | |
| <small>* – rebased as at 31 October 2010</small> | | | |
| | (Unaudited) Half year ended 30 April 2011 | (Unaudited) Half year ended 30 April 2010 | % Change |
| Revenue | | | |
| Gross revenue (£'000) | £7,630 | £8,145 | -6.3 |
| Earnings per ordinary share | 5.50p | 6.08p | -9.5 |

Interim Management Report



Richard Brewster – Chairman

Review of the period including material events and transactions

Our optimism that global equities would produce further gains has been borne out in the returns generated from Bankers portfolio over the last six months. The increase in net asset value and share price has been against a backdrop of further bailouts in Europe and a noticeable softening in expectations for global economic growth. Performance over the first half of our financial year has seen the net asset value per share rise by 8.5% compared to an increase of 7.5% in the FTSE All-Share Index and a rise of 8.3% in the 50/50 Composite Index. Share prices have increased in value principally due to a continuation in the recovery of corporate earnings, although a further programme of quantitative easing in the US last year has undoubtedly boosted the value of financial and commodity assets around the world. This injection of liquidity is unlikely to be unwound in the medium term and has kept long term interest rates at record low levels helping companies to refinance at favourable rates.

Over the period under review, stock picking has been key to our success and the majority of the positive returns has been generated by the relative outperformance from our UK, European and American portfolios. The ongoing Greek crisis and bailouts for Ireland and Portugal have had little effect on the strong growth in earnings being generated by northern European companies where the vast majority of our European investments are based. Exports to Asia

have clearly driven growth in Germany but consumers there are less leveraged and unemployment has been steadily falling having a positive effect on domestic demand. The austerity drive being instigated by the UK government may be suppressing economic growth but there are sectors in the UK that are prospering. The utility sector is enjoying price rises on the back of increasing inflation and exporters are still benefiting from the fall in sterling, especially those companies with exposure to Asia.

So far this calendar year our value orientated investment style is witnessing a notable improvement relative to the broader equity market. Investors appear to be focusing on dividends and valuations and are being more circumspect toward the apparent strong earnings from the highly valued, growth orientated companies. All too often enthusiasm gets the better of investors and growth companies become so highly rated that they struggle to deliver the steady upgrades in prospects that are required to sustain their lofty valuations. In terms of asset allocation we have increased exposure to Japan and the US. Following the devastating earthquake and resulting tsunami in March, the Japanese equity market fell over 8%, reflecting the anticipated disruption to the economy from both the power outages and disruption to supply chains. We felt that the Japanese economy would recover quickly from the initial shock, as it did after the Kobe quake in the mid 90's. The exposure to Japanese equities was increased to 9% of the portfolio. This move was driven by the low valuations we could see and we intend to review the position later in the year when the economic effects will be more clearly evident. The US portfolio was also increased as we felt company valuations were low compared to historic levels and were mismatched relative to the underlying growth rate of their earnings. US investors have

been heavy sellers of domestic equities in favour of bonds for the last three years and any reverse of this trend can only be helpful to maintain a recovery in share prices.

The gearing has been maintained at close to 4%. All bonds have now been sold and cash levels have been reduced. A new £20m borrowing facility has been secured which will provide scope to increase gearing as we become more confident in the sustainability of global economic growth without further stimulus from central banks.

Revenue return and dividends

The impact of slightly reduced equity dividend income in the first half, as a result of the change in the balance of our portfolio, is being rapidly offset by impressive dividend growth across all regions. The percentage of corporate earnings that are currently being paid to shareholders has fallen on average to below 40%, principally due to the rapid recovery in earnings not being matched by a corresponding increase in dividends. From a company point of view this is understandable, as it takes time before confidence in economic recovery translates into higher dividends. It appears that we may have reached this point as many recent dividend declarations have surprised the market in terms of the uplift in payouts.

Our revenue reserves now exceed £30m and more than twice cover the entire annual dividend. It is from this position that we expect to continue our record of 44 years of consecutive dividend growth. We have the flexibility to invest where we see capital returns not just income opportunities. We reconfirm our forecast in January that dividends declared this year will amount to not less than 12.7p, an increase of 5.0% over last year. Our second interim dividend of 3.175p per ordinary share will be paid on 31 August 2011.

Related party transactions

Details of related party transactions are contained in the annual report. Other than the fees payable by the Company in the ordinary course of business there have been no material transactions with our related party during the six month period affecting the financial position or performance of the Group.

Outlook

The uplift in corporate investment that is required to sustain higher levels of economic growth and create new jobs has yet to materialise. Without this vital extra impetus to economies, the current mid cycle pause in growth that we are witnessing may well continue through to the Autumn. There are certainly plenty of worries for investors, creating inaction in terms of putting savings to work into real assets. However, there is little discussion about what events might occur that would encourage those on the sidelines to buy equities. Over the coming six months we might have more clarity about when the Chinese stop tightening monetary policy. We may see some stabilisation in US house prices and expect corporate earnings to have advanced, thus reducing the P/E of the market if there is no movement upwards in share prices.

Despite a lacklustre outlook for economic growth, it is important to stress that we do not invest in economies but in companies that we expect will benefit from the opportunities that arise. By carefully selecting investments in those companies that are improving their operating activities and taking market share from competitors, we should continue to reward patient investors.

Richard Brewster
Chairman
21 June 2011

Consolidated Statement of Comprehensive Income

for the half year ended 30 April 2011

| | Revenue return £'000 | (Unaudited) Half year ended 30 April 2011 Capital return £'000 | Total £'000 |
|---|----------------------------|--|----------------|
| Gains on investments held at fair value through profit or loss | – | 44,654 | 44,654 |
| Investment income | 7,320 | – | 7,320 |
| Other operating income | 310 | – | 310 |
| Total income | 7,630 | 44,654 | 52,284 |
| Expenses | | | |
| Management fees | (490) | (264) | (754) |
| Other expenses | (345) | – | (345) |
| Profit before finance costs and taxation | 6,795 | 44,390 | 51,185 |
| Finance costs | (350) | (818) | (1,168) |
| Profit before taxation | 6,445 | 43,572 | 50,017 |
| Taxation | (340) | – | (340) |
| Profit for the period | 6,105 | 43,572 | 49,677 |
| Earnings per ordinary share (note 2) | 5.50p | 39.22p | 44.72p |

The total columns of this statement represent the Consolidated Statement of Comprehensive Income, prepared in accordance with IFRS. The revenue return and capital return columns are supplementary to this and are prepared under guidance published by the Association of Investment Companies. All items in the above statement derive from continuing operations. All income is attributable to the equity shareholders of The Bankers Investment Trust PLC. There are no non-controlling interests.

The accompanying condensed notes are an integral part of the financial statements.

As permitted by the Companies Act 2006, the Company has not presented its own Statement of Comprehensive Income. The net profit of the Company for the year was £49,677,000 (30 April 2010: £60,739,000; 31 October 2010: £70,690,000).

The Group does not have any other comprehensive income hence the net profit for the year as above is the same as the Group's total comprehensive income.

| Revenue return £'000 | (Unaudited) Half year ended 30 April 2010 | | Revenue return £'000 | (Audited) Year ended 31 October 2010 | |
|----------------------------|--|----------------|----------------------------|---|----------------|
| | Capital return £'000 | Total £'000 | | Capital return £'000 | Total £'000 |
| – | 54,967 | 54,967 | – | 59,081 | 59,081 |
| 7,988 | – | 7,988 | 16,108 | – | 16,108 |
| 157 | – | 157 | 370 | – | 370 |
| <u>8,145</u> | <u>54,967</u> | <u>63,112</u> | <u>16,478</u> | <u>59,081</u> | <u>75,559</u> |
| (431) | (232) | (663) | (862) | (464) | (1,326) |
| <u>(327)</u> | <u>–</u> | <u>(327)</u> | <u>(655)</u> | <u>–</u> | <u>(655)</u> |
| 7,387 | 54,735 | 62,122 | 14,961 | 58,617 | 73,578 |
| (339) | (790) | (1,129) | (684) | (1,596) | (2,280) |
| <u>7,048</u> | <u>53,945</u> | <u>60,993</u> | <u>14,277</u> | <u>57,021</u> | <u>71,298</u> |
| (254) | – | (254) | (608) | – | (608) |
| <u>6,794</u> | <u>53,945</u> | <u>60,739</u> | <u>13,669</u> | <u>57,021</u> | <u>70,690</u> |
| 6.08p | 48.24p | 54.32p | 12.26p | 51.13p | 63.39p |

Consolidated Statement of Changes in Equity

for the half year ended 30 April 2011

| | Called up share capital £'000 | Share premium account £'000 | Capital redemption reserve £'000 | Other capital reserves £'000 | Revenue reserve £'000 | Total £'000 |
|--|-------------------------------------|--------------------------------------|---|---------------------------------------|-----------------------------|----------------|
| Half year ended 30 April 2011 (Unaudited) | | | | | | |
| Balance at 31 October 2010 | 27,772 | 452 | 12,438 | 430,286 | 31,007 | 501,955 |
| Total comprehensive income: | | | | | | |
| Profit for the period | - | - | - | 43,572 | 6,105 | 49,677 |
| Transactions with owners, recorded directly to equity: | | | | | | |
| Buy back of 10,000 ordinary shares | (3) | - | 3 | (42) | - | (42) |
| Payment of 3rd interim dividend (3.00p) in respect of the year ended 31 October 2010 | - | - | - | - | (3,332) | (3,332) |
| Payment of final dividend (3.10p) in respect of the year ended 31 October 2010 | - | - | - | - | (3,444) | (3,444) |
| Balance at 30 April 2011 | 27,769 | 452 | 12,441 | 473,816 | 30,336 | 544,814 |
| Half year ended 30 April 2010 (Unaudited) | | | | | | |
| Balance at 31 October 2009 | 28,062 | 452 | 12,148 | 377,462 | 30,739 | 448,863 |
| Total comprehensive income: | | | | | | |
| Profit for the period | - | - | - | 53,945 | 6,794 | 60,739 |
| Transactions with owners, recorded directly to equity: | | | | | | |
| Buy back of 879,711 ordinary shares | (221) | - | 221 | (3,204) | - | (3,204) |
| Payment of 3rd interim dividend (3.00p) in respect of the year ended 31 October 2009 | - | - | - | - | (3,368) | (3,368) |
| Payment of final dividend (3.00p) in respect of the year ended 31 October 2009 | - | - | - | - | (3,357) | (3,357) |
| Balance at 30 April 2010 | 27,841 | 452 | 12,369 | 428,203 | 30,808 | 499,673 |
| Year ended 31 October 2010 (Audited) | | | | | | |
| Balance at 31 October 2009 | 28,062 | 452 | 12,148 | 377,462 | 30,739 | 448,863 |
| Total comprehensive income: | | | | | | |
| Profit for the year | - | - | - | 57,021 | 13,669 | 70,690 |
| Transactions with owners, recorded directly to equity: | | | | | | |
| Buy back of 1,160,211 ordinary shares | (290) | - | 290 | (4,197) | - | (4,197) |
| Payment of 3rd interim dividend (3.00p) in respect of the year ended 31 October 2009 | - | - | - | - | (3,368) | (3,368) |
| Payment of final dividend (3.00p) in respect of the year ended 31 October 2009 | - | - | - | - | (3,357) | (3,357) |
| Payment of 1st interim dividend (3.00p) in respect of the year ended 31 October 2010 | - | - | - | - | (3,341) | (3,341) |
| Payment of 2nd interim dividend (3.00p) in respect of the year ended 31 October 2010 | - | - | - | - | (3,335) | (3,335) |
| Balance at 31 October 2010 | 27,772 | 452 | 12,438 | 430,286 | 31,007 | 501,955 |

The accompanying condensed notes are an integral part of the financial statements.

Consolidated Balance Sheet

as at 30 April 2011

| | (Unaudited) 30 April 2011 £'000 | (Unaudited) 30 April 2010 £'000 | (Audited) 31 October 2010 £'000 |
|---|--|--|--|
| Non-current assets | | | |
| Investments held at fair value through profit or loss | 568,455 | 513,842 | 522,112 |
| Current assets | | | |
| Investments (note 3) | 500 | 8,300 | 6,949 |
| Other receivables | 3,349 | 5,367 | 3,831 |
| Cash and cash equivalents | 2,983 | 3,153 | 8,910 |
| | 6,832 | 16,820 | 19,690 |
| Total assets | 575,287 | 530,662 | 541,802 |
| Current liabilities | | | |
| Other payables | (5,473) | (5,989) | (14,847) |
| Total assets less current liabilities | 569,814 | 524,673 | 526,955 |
| Non-current liabilities | | | |
| Debenture stocks | (25,000) | (25,000) | (25,000) |
| Net assets | 544,814 | 499,673 | 501,955 |
| Equity attributable to equity shareholders | | | |
| Called up share capital | 27,769 | 27,841 | 27,772 |
| Share premium account | 452 | 452 | 452 |
| Capital redemption reserve | 12,441 | 12,369 | 12,438 |
| Retained earnings: | | | |
| Other capital reserves | 473,816 | 428,203 | 430,286 |
| Revenue reserve | 30,336 | 30,808 | 31,007 |
| Total equity | 544,814 | 499,673 | 501,955 |
| Net asset value per ordinary share (note 4) | 490.5p | 448.7p | 451.9p |

The accompanying condensed notes are an integral part of the financial statements.

Consolidated Cash Flow Statement

for the half year ended 30 April 2011

| | (Unaudited) Half year ended 30 April 2011 £'000 | (Unaudited) Half year ended 30 April 2010 £'000 | (Audited) Year ended 31 October 2010 £'000 |
|---|--|--|---|
| Net profit before taxation | 50,017 | 60,993 | 71,298 |
| Add back interest paid | 1,168 | 1,129 | 2,280 |
| Less gains on investments held at fair value through profit or loss | (44,654) | (54,967) | (59,081) |
| (Increase)/decrease in accrued income | (1,296) | (438) | 570 |
| Increase in other debtors | (2) | (1) | (2) |
| (Decrease)/increase in other creditors | (125) | 152 | 162 |
| Purchases of investments | (47,796) | (65,474) | (119,885) |
| Sales of investments | 46,114 | 59,442 | 110,009 |
| Purchases of current asset investments | (21,403) | (17,050) | (47,002) |
| Sales of current asset investments | 28,081 | 22,250 | 53,652 |
| Decrease/(increase) in amounts due from brokers | 1,900 | (2,668) | (2,096) |
| (Decrease)/increase in amounts due to brokers | (10,241) | 5,041 | 9,869 |
| Dealing profits | (229) | – | (99) |
| Net cash inflow from operating activities before interest and taxation | 1,534 | 8,409 | 19,675 |
| Interest paid | (1,176) | (1,128) | (2,259) |
| Taxation on investment income | (460) | (307) | (704) |
| Net cash (outflow)/inflow from operating activities | (102) | 6,974 | 16,712 |
| Financing activities | | | |
| Equity dividends paid | (6,776) | (6,725) | (13,401) |
| Purchase of ordinary shares | (42) | (3,204) | (4,197) |
| Drawdown of loan | 1,000 | – | 4,000 |
| Net cash used in financing | (5,818) | (9,929) | (13,598) |
| (Decrease)/increase in cash | (5,920) | (2,955) | 3,114 |
| Cash and cash equivalents at start of period | 8,910 | 5,989 | 5,989 |
| Exchange movements | (7) | 119 | (193) |
| Cash and cash equivalents at end of period | 2,983 | 3,153 | 8,910 |

The accompanying condensed notes are an integral part of the financial statements.

Notes

1. Accounting policies

The condensed half year financial statements have been prepared on the basis of the accounting policies set out in the Group's financial statements for the year ended 31 October 2010 and in accordance with IAS34. The tax charge is based on overseas tax suffered during the period.

2. Earnings per ordinary share

The earnings per ordinary share figure is based on the net profit for the half year of £49,677,000 (half year ended 30 April 2010: £60,739,000; year ended 31 October 2010: £70,690,000) and on 111,082,193 (half year ended 30 April 2010: 118,820,912; year ended 31 October 2010: 111,521,997) ordinary shares, being the weighted average number of ordinary shares in issue during the period.

The return per share detailed above can be further analysed between revenue and capital, as below.

| | (Unaudited) Half year ended 30 April 2011 £'000 | (Unaudited) Half year ended 30 April 2010 £'000 | (Audited) Year ended 31 October 2010 £'000 |
|---|--|---|--|
| Net revenue profit | 6,105 | 6,794 | 13,669 |
| Net capital profit | 43,572 | 53,945 | 57,021 |
| Net total profit | 49,677 | 60,739 | 70,690 |
| Weighted average number of ordinary shares in issue during each period | 111,082,193 | 111,820,912 | 111,521,997 |
| Revenue earnings per ordinary share | 5.50p | 6.08p | 12.26p |
| Capital earnings per ordinary share | 39.22p | 48.24p | 51.13p |
| Total earnings per ordinary share | 44.72p | 54.32p | 63.39p |

3. Current asset investment

The Group has a holding in Deutsche Bank Liquidity Fund (formerly Henderson Liquid Assets Fund), a money market fund that is used to hold what would otherwise be short term cash balances.

At 30 April 2011 this holding had a value of £500,000 (30 April 2010: £8,300,000; 31 October 2010: £6,300,000).

The subsidiary held investments at 30 April 2011: £nil (30 April 2010: £nil; 31 October 2010: £649,000).

Notes

continued

4. Net asset value per ordinary share

The net asset value per ordinary share is based on the net assets attributable to equity shareholders of £544,814,000 (30 April 2010: £499,673,000; 31 October 2010: £501,955,000) and on 111,075,839 (30 April 2010: 111,366,339; 31 October 2010: 111,085,839), being the number of ordinary shares in issue at the period end.

5. Called up share capital

At 30 April 2011 there were 111,075,839 ordinary shares of 25p each in issue (30 April 2010: 111,366,339; 31 October 2010: 111,085,839). During the half year ended 30 April 2011 the Company bought 10,000 of its own issued ordinary shares in the market for cancellation (half year ended 30 April 2010: 879,711; year ended 31 October 2010: 1,160,211). The cost of the share buy-backs, including stamp duty, amounted to £42,000 (half year ended 30 April 2010: £3,204,000; year ended 31 October 2010: £4,197,000).

6. VAT on management fees

While the Company has received back from HMRC 100% of the VAT which had been borne by the Company on management fees between 1990 and 1996, and 2000 and 2007, as well as simple interest on those amounts, there remains an amount outstanding relating both to VAT reclaims for 1996 to 2000 and compound interest for 1990 to 2007 which has not been recognised. It is uncertain whether any further amounts will be recovered.

7. Going concern

The directors believe that it is appropriate to adopt the going concern basis in preparing the financial statements. The assets of the Company consist mainly of securities that are readily realisable and, accordingly, the Company has adequate financial resources to continue in operational existence for the foreseeable future.

8. Interim dividend

The directors have declared a second interim dividend of 3.175p (2010: 3.00p) net per ordinary share, payable on 31 August 2011 to shareholders registered on 29 July 2011. The shares will be quoted ex-dividend on 27 July 2011. Based on the number of ordinary shares in issue at 21 June 2011 of 111,075,839 the cost of this dividend will be £3,527,000. A first interim dividend of 3.175p (2010: 3.00p) was paid on 31 May 2011 at a total cost of £3,527,000.

9. Comparative information

The financial information contained in this half year report does not constitute statutory accounts as defined in section 434 of the Companies Act 2006. The financial information for the half years ended 30 April 2011 and 2010 has not been audited or reviewed by the Auditors.

The figures and financial information for the year ended 31 October 2010 have been extracted from the latest published accounts of the Company. These accounts have been delivered to the Registrar of Companies and included the report of the auditors which was unqualified and did not contain a statement under either section 498(2) or 498(3) of the Companies Act 2006.

Directors' Responsibility Statement

The Directors confirm that, to the best of their knowledge:

- (a) the condensed set of financial statements has been prepared in accordance with IAS34;
- (b) the interim management report includes a fair review of the information required by Disclosure and Transparency Rule 4.2.7R (indication of important events during the first six months and description of principal risks and uncertainties for the remaining six months of the year); and
- (c) the interim management report includes a fair review of the information required by Disclosure and Transparency Rule 4.2.8R (disclosure of related party transactions and changes therein).

On behalf of The Bankers Investment Trust PLC

R D Brewster
Chairman

21 June 2011

Largest Investments

at 30 April 2011

The 50 largest investments (convertibles, fixed interest and all classes of equity in any one company being treated as one investment) were as follows:

| | Market value £'000 | | Market value £'000 |
|------------------------------------|-----------------------|--------------------------------|-----------------------|
| BP | 15,798 | QBE Insurance | 4,109 |
| Vodafone | 11,650 | Kasikornbank | 4,078 |
| British American Tobacco | 10,627 | Shire | 4,070 |
| Royal Dutch Shell | 10,472 | Impala Platinum | 4,048 |
| HSBC | 10,399 | Hunting | 4,035 |
| GlaxoSmithKline | 10,078 | Incitec Pivot | 4,005 |
| BG | 9,661 | Premier Oil | 4,000 |
| Catlin | 9,454 | Reckitt Benckiser | 3,989 |
| Petroleo Brasileiros | 8,051 | Galliford Try | 3,947 |
| Jardine Lloyd Thompson | 6,332 | Anglo American | 3,947 |
| National Grid | 6,222 | Apple | 3,911 |
| Xstrata | 6,162 | Fresenius | 3,834 |
| Aviva | 5,625 | Rolls-Royce | 3,809 |
| BHP Billiton | 5,049 | Compagnie Financiere Richemont | 3,778 |
| Essar Energy | 5,029 | Novartis | 3,683 |
| Christian Dior | 4,611 | Prudential | 3,644 |
| Santos | 4,495 | Tullow Oil | 3,583 |
| DBS | 4,491 | Bowleven | 3,512 |
| Mitsubishi UFJ Financial | 4,450 | Intermediate Capital | 3,456 |
| Bank Of China | 4,400 | Deutsche Post | 3,389 |
| Barclays | 4,375 | Amec | 3,360 |
| Taiwan Semiconductor Manufacturing | 4,327 | Sino Forest | 3,342 |
| Amcor | 4,248 | ENI | 3,280 |
| Petrofac | 4,228 | Ascendas | 3,272 |
| Wetherspoon (J.D.) | 4,168 | Fraser & Neave | 3,214 |

The investments total £267,697,000 which represents 47.1% of the portfolio.

Geographical Distribution

| | Valuation of investments | | Currency exposure of operational assets | |
|--------------------|--------------------------|-------------------------|--|-------------------------|
| | 30 April 2011 % | 31 October 2010 % | 30 April 2011 % | 31 October 2010 % |
| UK | 45.1 | 46.4 | 42.3 | 44.2 |
| Europe | 12.8 | 13.1 | 13.5 | 13.0 |
| North America | 20.5 | 16.1 | 21.5 | 17.3 |
| Japan | 8.3 | 7.9 | 8.8 | 8.3 |
| Pacific (ex Japan) | 11.0 | 12.7 | 11.5 | 13.3 |
| Emerging Markets | 2.3 | 3.1 | 2.4 | 3.2 |
| Fixed Interest | – | 0.7 | – | 0.7 |
| | 100.0 | 100.0 | 100.0 | 100.0 |

Investor Information

Directors*

Richard Brewster[#] (Chairman)
Richard Burns[#]
Richard Killingbeck^{†*} (Senior Independent Director)
Peter Sullivan[†]
Matthew Thorne[†] (Chairman of the Audit Committee)

*All directors are also members of the Management Engagement Committee

[†]Member of the Audit Committee

[#]Member of the Nomination Committee

Investment Manager

Henderson Global Investors Limited, authorised and regulated by the Financial Services Authority, represented by Alex Crooke

Secretary

Henderson Secretarial Services Limited, represented by Wendy King FCIS

Registered Number

Registered as an investment company in England No. 26351C

SEDOL Code

The London Stock Exchange Daily Official List (SEDOL) code is 0076700.



Registered Office

201 Bishopsgate,
London EC2M 3AE
Telephone: 020 7818 1818
Fax: 020 7818 1819

Share Price/Performance

The market price of the Company's ordinary shares is published in the Financial Times and other leading newspapers. Share price and details of the Company's performance can also be found on the following websites:

www.bankersinvestmenttrust.com

www.hendersoninvestmenttrusts.com

Auditors

PricewaterhouseCoopers LLP,
7 More London Riverside,
London SE1 2RT

Solicitors

Norton Rose,
3 More London Riverside,
London SE1 2AQ

UK Registrars

Equiniti Limited,
Aspect House,
Spencer Road,
Lancing,
West Sussex, BN99 6DA
Telephone: 0871 384 2471

There is a range of shareholder information online. You can check your holding and find practical help on transferring shares or updating your details at www.shareview.co.uk

New Zealand Registrars

Computershare Investor Services Limited,
Private Bag 92119,
Auckland 1142,
New Zealand
Telephone: (New Zealand) (64) 09 488 8777

UK Stockbrokers

JP Morgan Cazenove,
10 Aldermanbury,
London EC2V 7RF

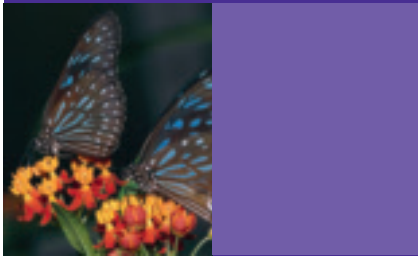
New Zealand Stockbrokers

First NZ Capital Securities,
Level 20,
ANZ Centre,
23-29 Albert Street,
PO Box 5333,
Auckland, New Zealand

The Company is a member of the

aic

The Association of
Investment Companies



Henderson Global Investors is the appointed Investment Manager for The Bankers Investment Trust PLC



Henderson
GLOBAL INVESTORS

This report is printed on 9lives, a paper containing 55% recycled fibre from both pre- and post-consumer waste & 45% FSC[®] certified virgin fibre. Pulp used is elemental chlorine free manufactured at a mill accredited with the ISO 14001 environmental management system.

The FSC logo identifies products which contain wood from well managed forests certified in accordance with the rules of the Forest Stewardship Council.

This report was printed by Pureprint Group using their pureprint environmental print technology which minimises the negative environmental impacts of the printing process. Vegetable-based inks were used throughout and 99% of the dry waste and 95% of the cleaning solvents associated with this production were recycled. Pureprint Group is a CarbonNeutral[®] company.

