

US STRATEGIC VALUE FUND

Class I\$dis ISIN: IE00B2B35T50

A sub fund of Janus Henderson Capital Funds plc

Objectives and Investment Policy

The Fund aims for growth on your investment over time. The Fund focuses mainly on investments in the shares of US companies of any size (including smaller companies) which are considered to be undervalued. These include special situations companies which are companies undergoing management changes or which are temporarily out of favour.

The Fund has no specific industry focus.

The Fund may also invest up to 33% of its value in non-US issuers.

The Fund may use financial derivatives (complex financial instruments) with the aim of risk or cost reduction within the portfolio. To a lesser extent,

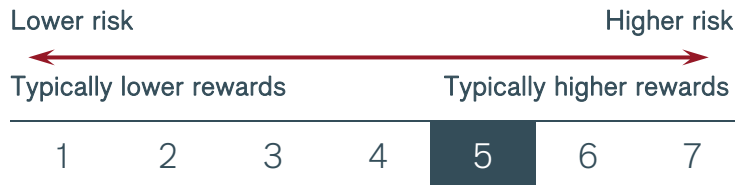
derivatives may also be used to generate additional returns or income for the Fund.

The Fund may invest in other types of eligible investments which are disclosed in the Prospectus.

You may sell your shares generally daily (i.e. on a business day for the Fund).

This share class pays you a dividend (income).

Risk and Reward Profile



The category is calculated based on historical data and is based on price movements in the share class (volatility), and may not be a reliable indicator of future risk. The risk category shown is not guaranteed and may change over time.

The lowest category does not mean the investment is risk-free.

This share class is in category 5 because of rises and falls in its value in the past.

The risk category does not take into account the following risks of investing in this share class:

Component Fund: This fund is designed to be used only as one component of several in a diversified investment portfolio. Investors should consider carefully the proportion of their portfolio invested into this fund.

Investment Risk: The value of an investment and any income from it can go up or down, and the Fund may not achieve its investment objective. When you sell your shares they may be worth less than you paid for them.

Equities: Shares can lose value rapidly and typically involve higher risks than bonds or money market instruments. The value of your investment may fall as a result.

Smaller Companies: Shares of small and mid-size companies can be more volatile than shares of larger companies, and at times it may be difficult to value or to sell shares at desired times and prices, increasing the risk of losses.

Country or Region: If a Fund has a high exposure to a particular country or geographical region it carries a higher level of risk than a Fund which is more broadly diversified.

Derivatives: The Fund may use derivatives with the aim of reducing risk or managing the portfolio more efficiently. However this introduces other risks, in particular, that a derivative counterparty may not meet its contractual obligations.

Exchange Rates: If the Fund holds assets in currencies other than the base currency of the Fund or you invest in a share class of a different currency to the Fund (unless 'hedged'), the value of your investment may be impacted by changes in exchange rates.

For a more detailed explanation of risks, please refer to the "Risk Factors and Special Considerations" section of the Prospectus.

Charges

These charges are used to pay the costs of running the Fund, including the costs of marketing and distributing. Overall, they reduce the growth of your investment.

One-off charges taken before or after you invest

Entry charge	2.00 %
Exit charge	None

This is the maximum that might be taken out of your money before it is invested and before the proceeds of your investment are paid out.

Charges taken from the Fund over a year

Ongoing charge	1.20 %
----------------	--------

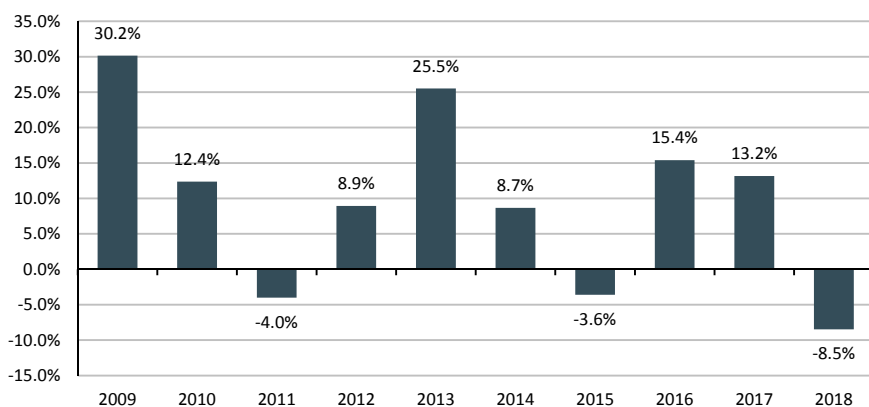
Charges taken from the Fund under specific conditions

Performance fee	None
Switching charge	None

The charges shown are the maximum figures. In some cases you might pay less. You can find out your actual charges from your financial adviser.

The ongoing charge is based on the previous year's expenses for the year ending December 2018. This figure excludes portfolio transaction costs and may vary from year to year. You can find out more details about the charges by looking at the Fees and Expenses section of the Fund's prospectus.

Past Performance



Class I\$dis

Past performance is not a reliable guide of future performance.

Past performance does not take into account any entry, exit or switching charges but does take into account the ongoing charge, as shown in the Charges section.

The performance of the class is calculated in USD.

The Fund launched on 30 November 2000. This class started to issue shares on 31 January 2008.

Practical Information

The depositary is Citi Depository Services Ireland Designated Activity Company.

Janus Henderson US Strategic Value Fund is a sub-fund of Janus Henderson Capital Funds plc, an umbrella fund with segregated liability between sub-funds. The assets of this Fund are segregated from other sub-funds of Janus Henderson Capital Funds plc. This document describes a share class of the Fund. The prospectus, annual and semi-annual reports are prepared for the entire umbrella.

Further information about the Fund, copies of its prospectus, annual and semi-annual reports may be obtained free of charge in English (the prospectus is also available in French and Italian) from Janus Henderson Capital Funds plc, Earlsfort Centre, Earlsfort Terrace, Dublin 2, Ireland or visit JanusHenderson.com.

Information on the current remuneration policy of the Fund, including a description of how remuneration and benefits are calculated and the identity of persons responsible for awarding the remuneration and benefits is available at www.janushenderson.com/ukpa/documents-finder. A paper copy of the information is available free of charge upon request from the Fund's investment adviser, Janus Capital International Limited.

The latest share prices, as well as further practical information, are available at the registered office of the administrator of Janus Henderson Capital Funds plc, Citibank Europe plc, at 1 North Wall Quay, Dublin 1, Ireland, during normal business hours.

Generally you may, with the consent of the directors, switch your shares to the corresponding share class of another sub-fund of Janus Henderson Capital Funds plc. Further information can be found in the Exchange of Shares section of the prospectus.

This Fund is subject to tax laws and regulations of Ireland. Depending on your home country of residence, this might have an impact on your personal tax position. For further details, please speak to your adviser.

Janus Henderson Capital Funds plc may be held liable solely on the basis of any statement contained in this document that is misleading, inaccurate or inconsistent with the relevant parts of the prospectus for the Fund.